

SAUA

JERNBANE

AKKERHAUGEN

FV553

RYNTVEIT NEDRE

CAMPING

HOLMEBUKTA

HAUKVIK

M 1:4000

0 20 40 80 120 160

Støynivå
Lden
i dB(A)

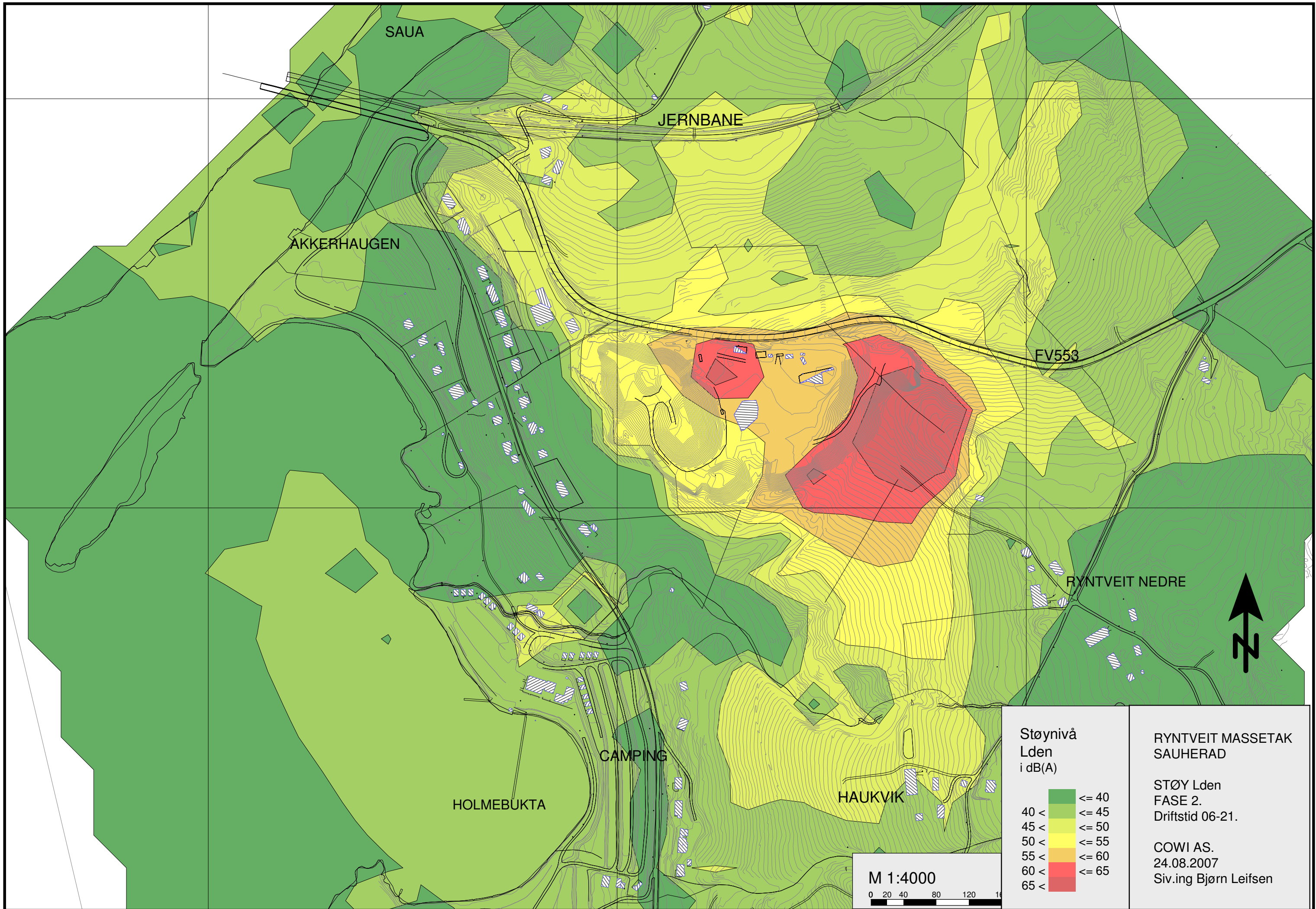
	<= 40
	40 < <= 45
	45 < <= 50
	50 < <= 55
	55 < <= 60
	60 < <= 65
	65 <

RYNTVEIT MASSETAK
SAUHERAD

STØY Lden
FASE 1. I DAG.
Driftstid 06-21

COWI AS.
04.10.2007
Siv.ing Bjørn Leifsen





Støynivå
Lden
 i dB(A)

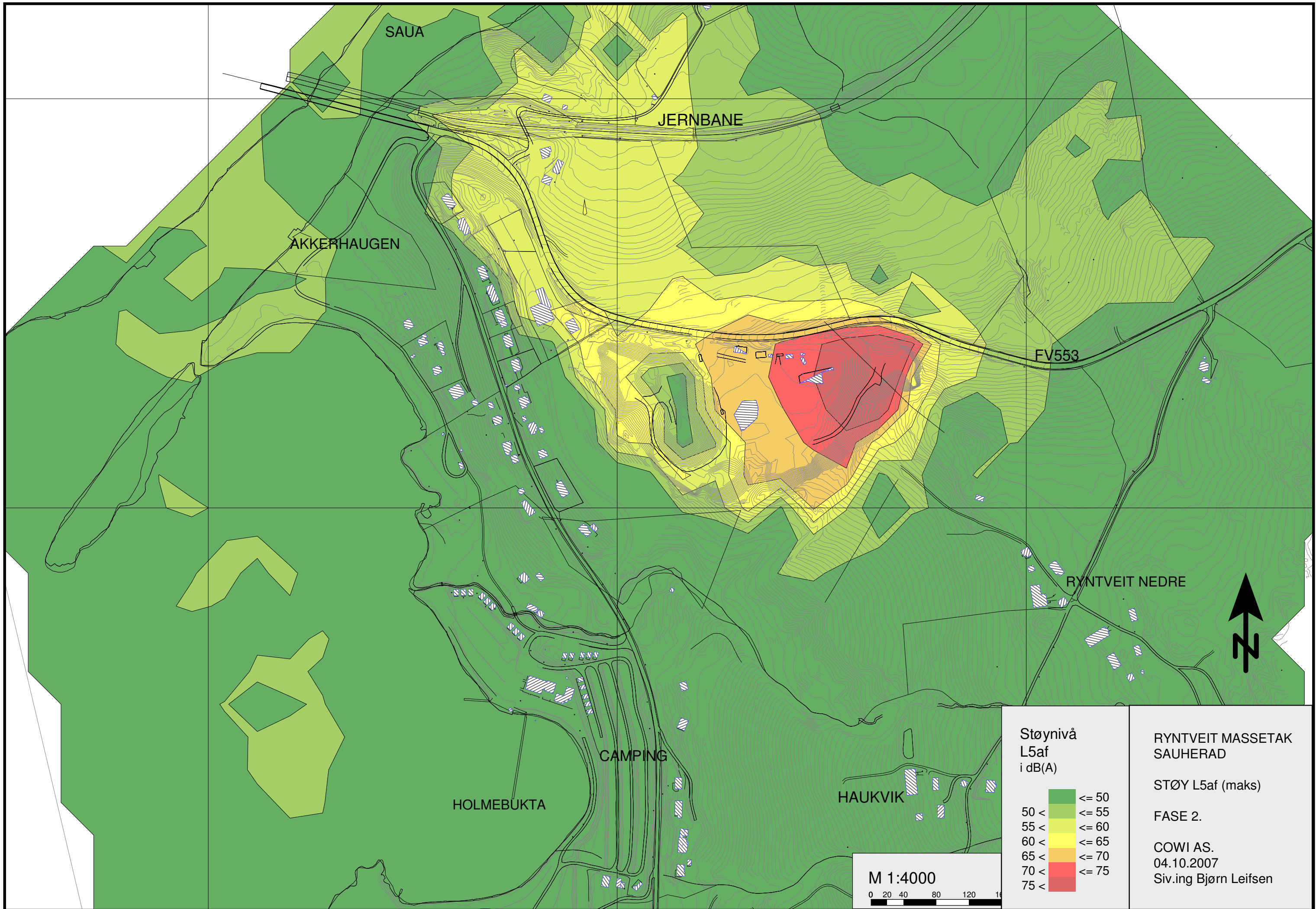
	<= 40
	40 < <= 45
	45 < <= 50
	50 < <= 55
	55 < <= 60
	60 < <= 65
	65 <

RYNTVEIT MASSETAK
SAUHERAD

STØY Lden
 FASE 2.
 Driftstid 06-21.

COWI AS.
 24.08.2007
 Siv.ing Bjørn Leifsen

M 1:4000
 0 20 40 80 120 160



Støynivå
L5af
i dB(A)

<= 50	Green
50 <	Light Green
55 <	Yellow-Green
60 <	Yellow
65 <	Orange
70 <	Red-Orange
75 <	Red

RYNTVEIT MASSETAK
SAUHERAD

STØY L5af (maks)

FASE 2.

COWI AS.
04.10.2007
Siv.ing Bjørn Leifsen

M 1:4000

0 20 40 80 120 160